



# SMOKE SIGNALS

Winter 2017 – Vol. 2, Issue 1

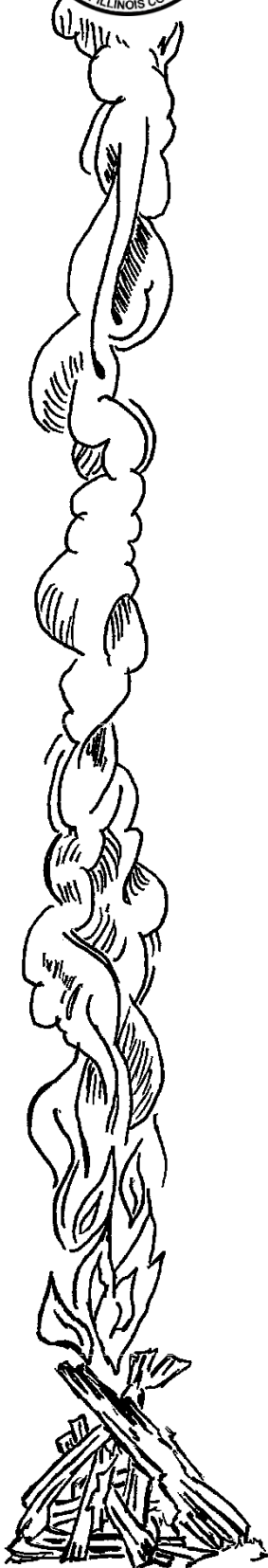
The Official Publication of the Ma-Ka-Ja-Wan Alumni Association



Thank you, Mr. Mike Hale, for your service to Northeast Illinois Council!



Camaraderie at the M.A.A Winter Party



## Table of Contents

Letter from the Editor (K. Nicole Ludmer) .....	3
Letter from Ma-Ka-Ja-Wan Scout Reservation Director (Brian Rasmussen) .....	4
Outstanding Alumni Service Award (John Lillstrom) .....	5
M.A.A. Winter Party Photo Recap.....	6
Letter from the Scout Executive (Mike Hale) .....	7
W.E.S. Updates .....	7
Membership .....	8
Activity Calendar.....	9-10
M.S.R. Improvements .....	11-12
Climbing Level 1 & 2 Training .....	13
Smoke Signals Publishing Guidelines .....	13
How to Join SSS 129 and MAA .....	14
Application .....	15

## Board Members

### Board Members:

K. Nicole Ludmer—Smoke Signals Editor  
Robert King—Skipper & Editor Emeritus & CoMembership Chair  
John Lillstrom—MAA Chair  
Cory Hinz—Asst Chair & Merchandise Coordinator  
Don Sesterhenn—finance  
Matt Horbal—Media Expert  
Brian Dennen—Membership  
Robert Brown—CoMembership Chair  
Brian Rasmussen—MSR Director & SSS 129 Skipper  
Stephanie Brooks—Staff Advisor  
Ian Hopkins—Remembrance Area Steering Committee

### Committee Members:

Brian McIlwee  
Joe Jordan  
Joe Pinkowski  
Matt Gummersall  
Pat Sheehan  
Paul Jordan  
Steve Derebey  
Steve Sesterhenn  
Joseph Behles  
David Johnson  
Mike Hale  
Al Lovas



## *Ma-Ka-Ja-Wan Alumni Winter Party Recap*

*Nicole Ludmer*

Dear Ma-Ka-Ja-Wan Alumni,

It was great seeing so many of you at the Ma-Ka-Ja-Wan Alumni Winter Party! I think it's safe to say that everyone had an enjoyable time at Mickey Finn's in Libertyville! Mr. Kevin Baldwin served as our Master of Ceremonies. We heard from our Ma-Ka-Ja-Wan Scout Reservation Director, Mr. Brian Rasmussen, about how we can better serve our college-bound and college-level staff members by offering pre/post camp internships, as well as offering guidance for their resumes.

Mr. John Lillstrom presented the Distinguished Alumni Award to our Northeast Illinois Council Executive Director, Mr. Mike Hale. Mr. Hale has served as our Scout Executive, and has become the new Deputy Regional Director for the Western Region. Thank you for your service and dedication to the Northeast Illinois Council. We wish you good luck in all your endeavors! I was also humbled and honoured to be a recipient of the Distinguished Alumni Award for my contributions to Smoke Signals.

Mr. Paul Jordan recognized Mr. Bob King for his extraordinary service to Ma-Ka-Ja-Wan. Next, Mr. John Lillstrom recognized those of the M.A.A. who have become Lifetime Members—a special thanks to Mr. Joe Jordan and Mr. Paul Schmidt who were the first to sign up!

Mr. Quinn Ryan presented Mr. Mike Hale as an honorary Lifetime Member of the M.A.A. And finally, Mr. Hale closed out the night with some of his own remarks, and reminded us that we are, "Standing on the shoulders of those who came before us." It is because of members like you that Camp Ma-Ka-Ja-Wan continues to thrive and prosper. Thank you for your continued support!

Yours in Scouting,  
Nicole Ludmer



Matthew Gummersall's Ma-Ka-Ja-Wan patch collection on display at the Winter Party!

# *Letter from Ma-Ka-Ja-Wan Reservation Director*

*Brian Rasmussen*

Many of you probably look back on your time as a member of the Ma-Ka-Ja-Wan staff as one the best experiences of your life. You made numerous sacrifices in order to be able to come back to camp year after year. That feeling still exists today among the current staff and that's why I am asking for some help.

Every year we lose veteran staff members because their college coursework requires them to complete an internship in their chosen field. I am asking if you are in a position to offer an internship to these staff members perhaps they can work on that both before and after camp. Most colleges are done by the second week of May, and camp doesn't start until the middle of June. Camp is over by the first week of August, and school doesn't start up until later in that month. With your assistance they could work on the internship for the four to five weeks before camp, and then return to complete it during that period before returning to school. This would afford them an opportunity to have the internship, and still work at camp.

Another area where we are seeking help is in the area of resume writing. Many of our staff members have responsibilities at camp that include training, supervising, and evaluating staff. They are involved in planning and implementing program, and are required to present that program to a variety of different age and ability levels. We are seeking help from people with human resource expertise to help staff members use words and phrases to explain the true scope of their camp jobs.

If you are in a position where you are able to help our staff in either of the areas please feel free to contact me at [brian@makajawan.com](mailto:brian@makajawan.com).





# Outstanding Alumni Service Award

*John Lillstrom*

History of the Outstanding Alumni Service Award:

This award began during Ma-Ka-Ja-Wan's 85<sup>th</sup> year. It recognizes people that have made a major contribution to the Ma-Ka-Ja-Wan Alumni Association. There are no specific requirements, but there must be consensus from the M.A.A. Committee that a recipient has gone over and above in service to Ma-Ka-Ja-Wan.

The following recipients were recognized at the 85<sup>th</sup>:

(From left to right) John Hopkins, John Lillstrom, Brian McIlwee, and Bob King



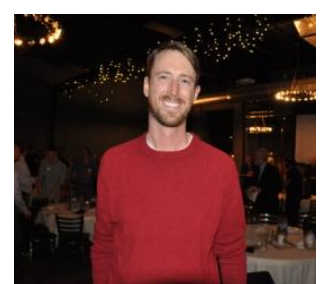
The following recipients were recognized this year:

(From left to right) Mike Hale and Nicole Ludmer





# *M.A.A. Winter Party Photos Recap*



## *Letter from the Executive*

*Mike Hale*

I was thinking about the first time I saw camp. It was February and the Scout Executive, Bob Russell drove me up. He talked to me along the way about how Ma-Ka-Ja-Wan had such a crucial impact on Scouting down on the shore. He said he wanted to see my face when I saw camp for the first time. I was not disappointed by the first visit. I was up there in early March this year and the feeling I get when I arrive has not changed. It is home.

The impact that Ma-Ka-Ja-Wan makes on the campers that we serve is crucial to their entire Scouting experience. We should all strive to help ensure that we continue to improve their experience. By all of us continuing to offer our time, talents and treasures, we make a statement that we are supportive and will continue to be so. That it made a huge impact on all our lives.

I appreciated all of those who walked on the trails ahead of me. They are the reason that my first experience at camp over 25 years ago was a stellar one. As I make way for a new Supreme Chief of the Fire, I know that all of you will continue to work together to keep Ma-Ka-Ja-Wan a special place for generations to come. Insist on holding fast to our robust traditions and we will continue to grow.

## *W.E.S. Updates*

*John Hopkins*

### 2017 Spring W.E.S. & O.A. Worker Weekends:

- 1<sup>st</sup> WES worker weekend- May 19, 20, & 21
- 2<sup>nd</sup> WES worker weekend-June 2, 3, & 4
- OA WW- May 26, 27, 28 & 29

### Projects:

- Maintenance Barn- installing 18 new windows & upgrading exterior panels
- Health Lodge-Interior upgrade in med room- new floor & punch list
- E & W Shooting sports- Build Field Archery program areas/shot gun traps/camp opening tasks
- E & W AQ maintenance on AQ Sailboats/paddles/oars & etc.
- E & W Dining Hall- Install fire suppression units in hoods
- E & W Dining Hall-Install new screen doors
- East- Fish Shack- steel re-roofs
- Build V-shaped new entry way sign & road gateway over spring rd.
- Build Ranch program shelter
- Maintenance work @ Ranch Bunkhouse/office
- Continue on Village plat maintenance
- Continue on (East) Village Latrine-steel re-roofs
- Various exterior painting projects

### Requested Items:

- Ladders
- Painting equipment



## Membership

Congratulations to our **Lifetime Members!** Thank you for your support!

### LIFETIME MEMBERS

CYNTHIA BILISKO  
PAUL BILISKO  
JASPER BOND  
CHARLES BROOK  
JAMES ERICKSON  
EDWARD FITZGERALD  
MARK HOBSON  
ALAN LOVAS

MATT LUDMER  
NICOLE LUDMER  
STEPHEN MURKILL  
E. ROBISON  
STEVEN SESTERHENN  
PATRICK SHEEHAN  
VICTOR VISOKY

Instructions on how to join or renew can be found online at: <http://msraa.org/129/join/>.  
Beginning this year we are also offering Young Alumni & Lifetime memberships.

#### 3 Types of Membership:

1. Young Adult: 18-25 years; no dues payment
2. Regular Membership: \$20/year
3. LIFETIME MEMBERSHIP: \$201.29





# Activity Calendar

**May 2017**

Sun	Mon	Tue	Wed	Thu	Fri	Sat
	1	2	3	4	5	6
7	8	9	10	11	12	13
14	15	16	17	18	19	20
					WES Workers Weekend	WES Workers Week- end
21	22	23	24	25	26	27
WES Workers Weekend					OA Work- ers Week- end	OA Workers Week- end
28	29	30	31			
OA Workers Weekend	OA Workers Weekend					



# Activity Calendar

## June 2017

Sun	Mon	Tue	Wed	Thu	Fri	Sat
				1	2	3
					<b>WES Workers Weekend</b>	<b>WES Workers Weekend</b>
4	5	6	7	8	9	10
<b>WES Workers Weekend</b>						
11	12	13	14	15	16	17
18	19	20	21	22	23	24
25	26	27	28	29	30	





# *M.S.R. Improvements*

*Tom MacFadden*

## East Camp Firebowl

- New for Summer 2017
- Increased capacity
- Shoreline improvement with access to lake



B  
E  
F  
O  
R  
E



A  
F  
T  
E  
R





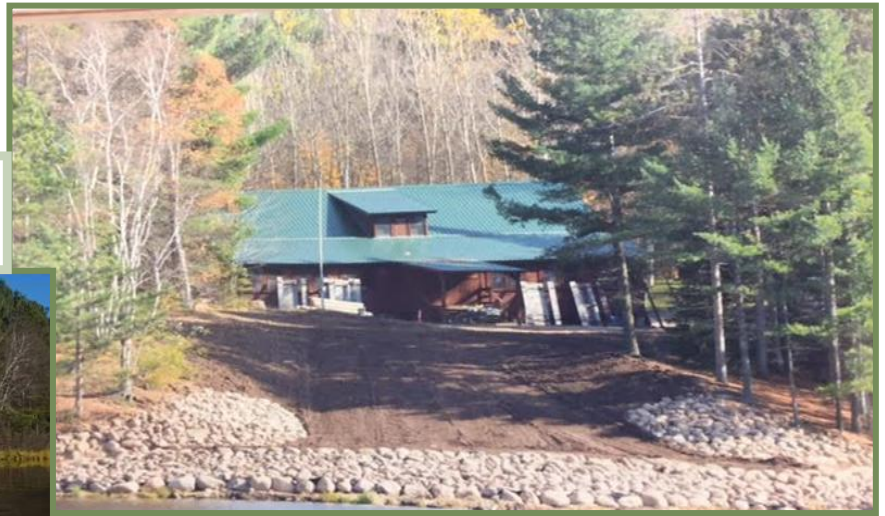
# M.S.R. Improvements

Tom MacFadden

B  
E  
F  
O  
R  
E



A  
F  
T  
E  
R



## SILCA PROJECTS





## *Climbing Level 1 & 2 Training*

*Nicole Karlove*

If you are reading this, then you're interested in becoming a certified Climbing and COPE (high and low ropes) instructor!

We will be holding a two-part training event. The first session will be on March 31-April 2 at Camp Crown. The second session will be on May 12-14.

There is a \$100 fee which will cover materials, food and camping for attending both trainings.

Instructors may present their proof of certificate at Camp Ma-Ka-Ja-Wan. Those who are Level 1 and Level 2 trained may belay at Camp Ma-Ka-Ja-Wan. You may be asked to perform a quick belay check, climbing command and knot test—all final say will be left to the discretion of the Climbing Director.

If you are interested, please contact Nicole:

[Nicole.Karlove@scouting.org](mailto:Nicole.Karlove@scouting.org)

We hope to see you there!

-Nicole

### ***Smoke Signals Publishing Guidelines:***

***We want to hear from YOU!***

*Want to contribute a Snippet of your camp memories or experiences?  
Follow the guidelines listed below, and send it to us for publication!*

#### **Smoke Signals Publishing Guidelines:**

The Smoke Signals Editorial Board invites all members to submit articles, reviews, Trivia, and/or Blast from the Past stories according to these Guidelines.

-K. Nicole Ludmer, Editor-in-Chief

#### **Submission:**

Please send your works for publication with a brief suggested title to [K.Nicole.Ludmer@gmail.com](mailto:K.Nicole.Ludmer@gmail.com); please include "Smoke Signals" in the subject line. All acronyms and abbreviations must be defined. Any photos or other graphics to be used must be sent in a separate file with proper citation.

#### **Review Policy:**

The Smoke Signals editorial board will review all submissions regarding format, style, and language.

## How to Sign Up for SSS#129 and MAA

### Join Ship 129!!

We encourage you to join the Ma-Ka-Ja-Wan Alumni Association (MAA) to reconnect with your friends and beloved camp. You can enhance your MAA membership and experience by joining Sea Scout Ship (SSS) #129. This is an active Scout unit in the Northeast Illinois Council (NEIC) and is comprised by current and former staff members.

By joining SSS#129 as an adult leader you can reconnect with Scouting and Northeast Illinois Council. Members of the Ship receive the National BSA Council's monthly magazine: "Scouting" for adult leaders and all NEIC's publications and e-mail newsletters. For an additional fee, you can subscribe to "Boy's Life" magazine.

To be eligible for adult membership:

- You must be over 18 years of age;

Working in cooperation with the broader Ma-Ka-Ja-Wan Alumni Association, the goal of the Ship is to bring together, in a support organization, all those who have experienced that unique adventure of being a member of the Ma-Ka-Ja-Wan Scout Reservation staff or as a long-time volunteer. **Membership in SSS#129 requires the completion of the "online" Youth Protection Program every two years to maintain your membership. Annual SSS#129 membership renewals will occur every May.**

**The official adult application forms can be accessed on the Internet using the following link and printed out on your printer.**

Select "Adult Application" and print the forms. You may also request applications by contacting John Lillstrom at:

[John.Lillstrom@gmail.com](mailto:John.Lillstrom@gmail.com) or calling him at (715) 623-6629.

**To complete Youth Protection Training you must go to: [www.myscouting.org](http://www.myscouting.org) and create your account. Once your account is established you can click on the Youth Protection Training tab to complete the 20-minute course.**

- |  |                 |
|--|-----------------|
| • Yearly membership for MAA                | \$20            |
| • <b>MAA LIFETIME MEMBERSHIP</b>           | <b>\$201.29</b> |
| • Yearly membership for SSS#129            | \$24            |
| • Yearly subscription to <i>Boy's Life</i> | \$12            |

**A check for \$56 gets all three yearly memberships. A check for \$237.29 gets you a Lifetime Membership for MAA and a Yearly membership and subscription to SSS#129 and Boy's Life Magazine, respectively. If you are a registered Scouter, there is no charge to add SSS#129 as an additional unit. *Boy's Life* is an optional fee.**

Completed applications, Youth Protection certificate (if necessary), along with the appropriate check made payable to: **Northeast Illinois Council** will then be mailed to:

**Sea Scout Ship #129  
c/o John Lillstrom  
W8986 Claire Rd  
Deerbrook, WI. 54425**

Upon acceptance of your application, you will be commissioned as a *Skipper's Mate* in SSS#129. (This is equivalent to an Assistant Scoutmaster position.) A certificate of

membership in the *Camp Staff Veterans of Sea Scout Ship #129* (if qualified) will be sent to your mailing address. You will receive your Ship registration card from the National Council, BSA. As a full member of the Ma-Ka-Ja-Wan Alumni Association you will be alerted to alumni events, activities, and important information regarding your Scouting alma mater.

Please direct any questions regarding registration to:

**Brian McIlwee**

[Brianm@mcilweemillwork.com](mailto:Brianm@mcilweemillwork.com)

or John Lillstrom [john.lillstrom@gmail.com](mailto:john.lillstrom@gmail.com)





# Ma-Ka-Ja-Wan Alumni Association Application

## INSTRUCTIONS

Join online at [neic.org/alumni](http://neic.org/alumni) OR mail this form with dues payment to:

Ma-Ka-Ja-Wan Alumni Association  
2745 Skokie Valley Road  
Highland Park, IL 60035

## CONTACT INFORMATION

Name: \_\_\_\_\_

Birth Date (must be >18 to join): \_\_\_\_/\_\_\_\_/\_\_\_\_

Address: \_\_\_\_\_ City: \_\_\_\_\_

State: \_\_\_\_\_ Zip Code: \_\_\_\_\_

Phone Number: (\_\_\_\_) \_\_\_\_-\_\_\_\_ E-mail: \_\_\_\_\_

May we share your name and e-mail with the Association Membership? \_\_ (Y) \_\_ (N)

## OTHER INFORMATION

Please mark all that apply: Camper \_\_\_\_ Leader \_\_\_\_ Staff \_\_\_\_ Friend \_\_\_\_

First Year at Ma-Ka-Ja-Wan \_\_\_\_\_



Relationship to Ma-Ka-Ja-Wan (e.g. years, E/W/R, Unit, etc.): \_\_\_\_\_

Professional Information (job, employer, city, industry, etc.): \_\_\_\_\_

Are you interested in participating in the Mentorship Program? \_\_ (Y) \_\_ (N)

### TYPES OF MEMBERSHIP:

Annual Dues (check box)

<input type="checkbox"/> Young Adult (18 to 25 years of age)	Free
<input type="checkbox"/> Standard	\$20.00
<input type="checkbox"/>  Lifetime 	\$201.29

Additional Contribution \_\_\_\_\_

**Total Enclosed** \_\_\_\_\_

Dues are on the calendar year and not prorated. Make checks payable to "Northeast Illinois Council BSA," place "MAA Membership" in the memo line. Any additional amount contributed will be used in direct support of the Ma-Ka-Ja-Wan Scout Reservation under the supervision of the Association and the Council Executive Board. MA-KA-JA-WAN ALUMNI ASSOCIATION.

*Honoring Yesterday*  *Connecting Today*  *Supporting Tomorrow*

[www.Ma-Ka-Ja-Wanalumni.org](http://www.Ma-Ka-Ja-Wanalumni.org)